

**LOCATION MAP**



**LOCATION ADVANTAGES**

METRO RAIL 3 MINS	CENTRAL PARK 5 MINS	ISKCON TEMPLE 5 MINS	GOLF COURSE 5 MINS	CORPORATE PARK (NEXT BKC) 5 MINS
SCHOOLS, MALLS, MULTIPLEXES, HOTELS, HOSPITALS & BANKS ETC. 5 MINS		MUMBAI-PUNE EXPRESSWAY 15 MINS	NAVI MUMBAI INTERNATIONAL AIRPORT 20 MINS	



MahaRERA Reg. No. Phase I - P51700002446,  
Phase II - P52000026796, Phase III - P52000029168  
(<https://maharera.mahaonline.gov.in>)

Architect Hiten Sethi & Asso.	Interior Consultant Vini & Asso.	Landscape Architect Newarch Landscapes LLP	RCC Consultant Mahimtura Consultants Pvt. Ltd.	MEP Consultant Anil Verma & Asso.
----------------------------------	-------------------------------------	---	---	--------------------------------------

Site Office: Paradise Superstructures, Sai World Empire, Opp. Kharghar Valley Shilp (CIDCO Colony), Kharghar, Navi Mumbai  
 Corp. Office: 1701, Satra Plaza, Plot No. 19 & 20, Sector - 19 D, Vashi, Navi Mumbai - 400 705  
 Tel.: 022 2783 1000 / 2783 9000 | Email: enquiry@paradisegroup.co.in | Web: www.saiworldempire.net  
 www.paradisegroup.co.in | Follow us on:

A PROJECT BY  
**PARADISE GROUP**  
 Your World. Our Vision.  
 ISO - 9001: 2015 Certified Organization

**GRANDEUR OF 6 FAMOUS EMPIRES  
 DISCOVERS YOUR HOME**



**SAI  
 WORLD EMPIRE  
 KHARGHAR**

Image for representation purpose only

thoughttrains

**6 EMPIRES, 6 LIFESTYLES  
1 MODERN KINGDOM**



SAI  
**WORLD EMPIRE  
KHARGHAR**

**PROJECT HALLMARKS**



18 ACRE  
KINGDOM



G+46 STOREYED  
MAGNIFICENT TOWERS



2, 3 & 4 BHK  
LUXURY HOMES



GRAND  
CLUB ATHENA



DESIGNER  
PODIUM GARDEN

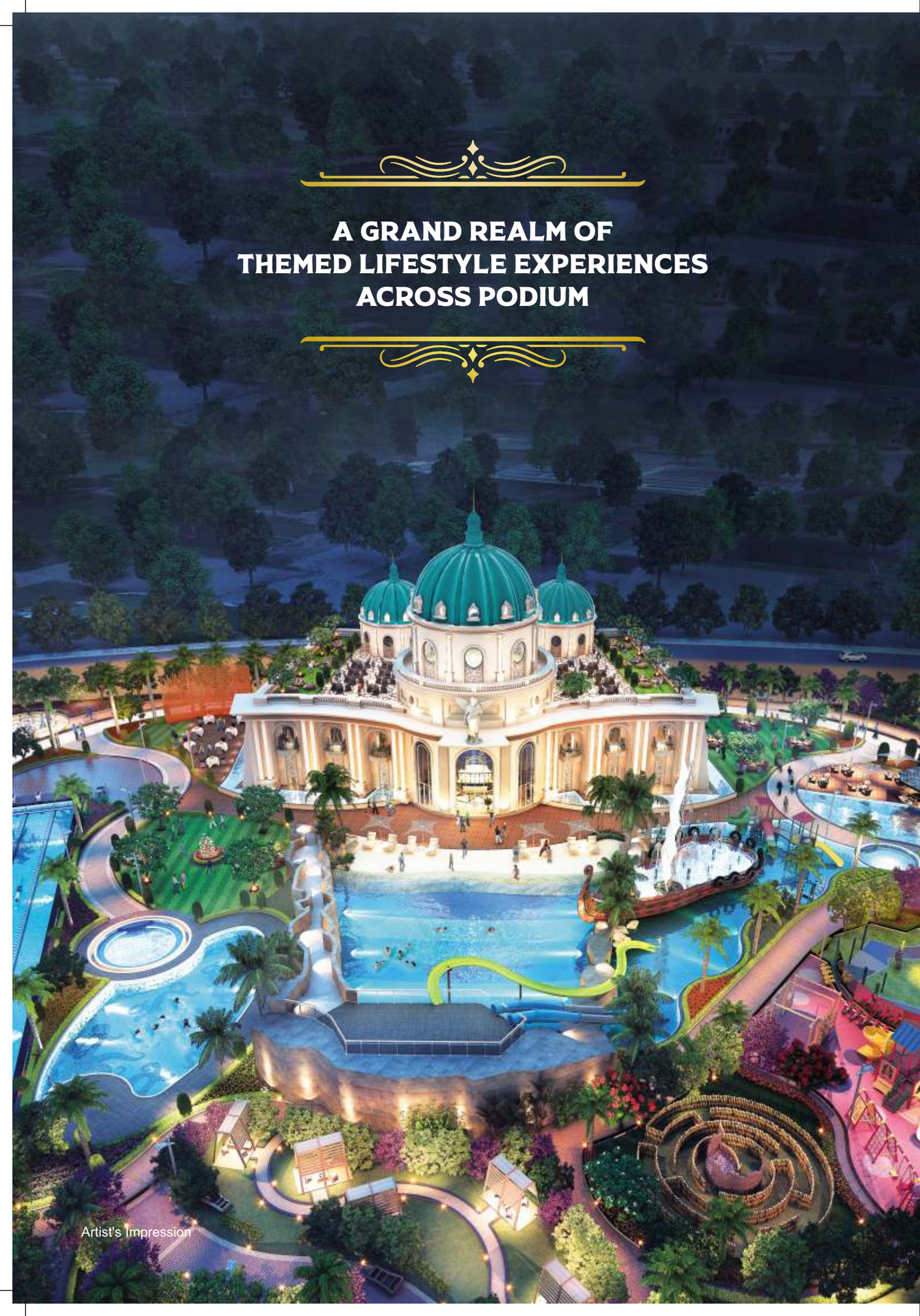


AMPLE PARKING  
SPACE



EXPERIENCE  
**KHARGHAR'S MOST  
LUXURIOUS KINGDOM BRINGING  
THE BEST OF HEALTH, WELLNESS,  
ENTERTAINMENT, SPORTS  
AND RECREATION**

**A GRAND REALM OF  
THEMED LIFESTYLE EXPERIENCES  
ACROSS PODIUM**



**FEATURING  
6 ROYAL LIFESTYLE AMENITIES THAT BEFIT  
THE MODERN DAY KINGS AND QUEENS LIKE YOU**



**THE COLOSSEUM DOME**  
INSPIRED BY THE ROYALTY OF  
KING JULIUS CAESAR OF ROMAN EMPIRE



**CLUB ATHENA**  
INSPIRED BY THE GRANDEUR OF  
KING ALEXANDER THE GREAT OF GREEK EMPIRE



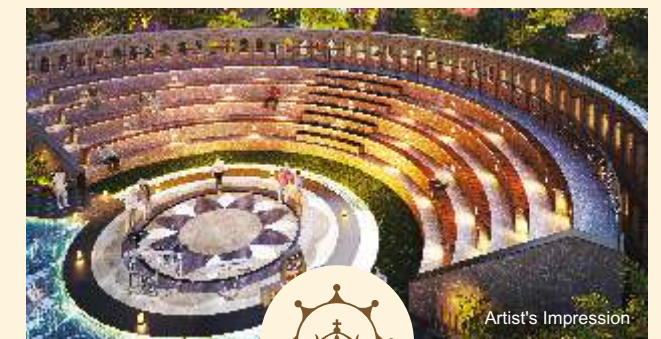
**GRAND ENTRANCE**  
INSPIRED BY ARCH DE TRIUMPH THAT WELCOMED  
KING NAPOLEON BONAPARTE OF FRENCH EMPIRE



**ASWAN SPA**  
INSPIRED BY ROYAL INDULGENCES OF  
QUEEN CLEOPATRA OF EGYPTIAN EMPIRE



**ESPANA KIDS PARK**  
INSPIRED BY GAUDI ARCHITECTURE &  
LIFESTYLE OF KING CHARLES-I OF SPANISH EMPIRE



**THE BROADWAY AMPHITHEATRE**  
INSPIRED BY ICONIC AMPHITHEATRE & ROYALISM OF  
QUEEN ELIZABETH-I OF BRITISH EMPIRE

Artist's Impression

Artist's Impression

Artist's Impression

Artist's Impression

Artist's Impression

Artist's Impression

Artist's Impression

LEISURE POOL WITH  
FLOATING BAR



Artist's Impression

MULTI-PURPOSE  
SPORTS COURT



Artist's Impression

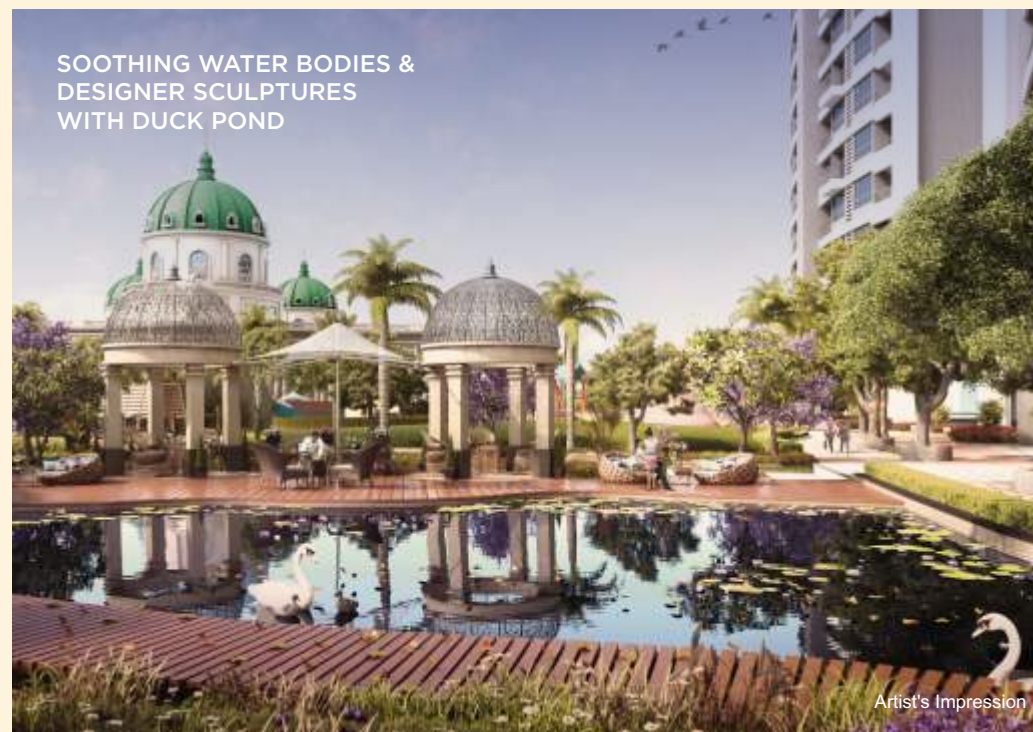
PEACEFUL LANDSCAPED  
BOULEVARD WITH  
MEDITATION GAZEBO



Artist's Impression

**EXPERIENCE  
ROYAL LIVING SPREAD  
ACROSS ACRES OF LANDSCAPED  
PODIUM GARDEN WITH MESMERISING VIEWS  
AND NATURAL SURROUNDINGS**

SOOTHING WATER BODIES &  
DESIGNER SCULPTURES  
WITH DUCK POND



Artist's Impression

WAVE POOL WITH LOUNGERS,  
SIT-OUTS & RAIN DANCE SHIP



Artist's Impression

BAMBOO MAZE GARDEN WITH  
WALKWAYS & SIT-OUTS



Artist's Impression

WELL-PAVED JOGGING  
& CYCLING TRACK



Artist's Impression

THEMED GARDENS  
WITH PET PARK



Artist's Impression

LET THE GRANDEUR OF  
GREEK KINGDOM BECOME YOUR  
BEST PLACE OF CELEBRATIONS



**CLUB  
ATHENA**  
BY THE BEACH SIDE



SPA WITH  
AROMATIC AMBIENCE



PERSONAL NUTRITIONIST



AIR-CONDITIONED AEROBICS  
CENTRE WITH PERSONAL TRAINER



MODERN GYMNASIUM  
WITH TRAINER



AIR-CONDITIONED YOGA  
& MEDITATION ROOM



AEROBICS  
EXERCISE POOL



JACUZZIS  
WITH HOT JETS



BANQUET HALL FOR  
PARTIES & GET-TOGETHER





SAI  
WORLD EMPIRE  
KHARGHAR

THE MODERN DAY  
EMPIRE CELEBRATING  
THE ROYAL ERA OF IMPERIALISM



Artist's Impression





ACTUAL LOBBY IMAGE OF CAESAR TOWER - ROMAN EMPIRE



ELEVATOR LOBBY ACTUAL IMAGE



WISHING FOUNTAIN ACTUAL IMAGE



ELEVATOR AISLE ACTUAL IMAGE

# 6 MAGNIFICENT TOWERS SPREAD ACROSS 18 ACRES



## MASTER PLAN

### LEGEND

- 01 ENTRANCE LOBBY
- 02 CYCLE TRACK
- 03 JOGGING TRACK
- 04 GRAND PLAZA WITH MUSICAL FOUNTAINS
- 05 MULTI-PLAY COURT (TENNIS / BASKET BALL COURT / CRICKET)

### FRENCH COVE

- 06 COLOSSEUM ARENA
- 07 SPRAWLING LAWN
- 08 STROLL WALK
- 09 CLOISTER
- 10 STEPPING STONES
- 11 AMPHI ENTRY FROM LANDSCAPE
- 12 COLOSSEUM
- 13 FLOATING BELVEDERE FOR SHOWS
- 14 SHALLOW POND AT PARKING LEVEL
- 15 AMPHI ACCESS AT PARKING LEVEL
- 16 SEATIGAL COVE
- 17 ROTUNDA

### ARABIC COVE

- 18 MUGHAL COVE
- 19 CHESS BOARD
- 20 DUCK POND
- 21 BIRD FEEDING DECK
- 22 PAVILION

### BRITISH COVE

- 23 PETS PARK
- 24 DENSE PARK
- 25 REFLEXOLOGY PATH

### EGYPTIAN COVE

- 26 SAND RIVER
- 27 PICNIC PAVILION
- 28 BRIDGE
- 29 BAMBOO TRAILS
- 30 PYRAMID PLAYGROUND
- 31 GOLF IN MIRROR MAZE

### ROMAN COVE

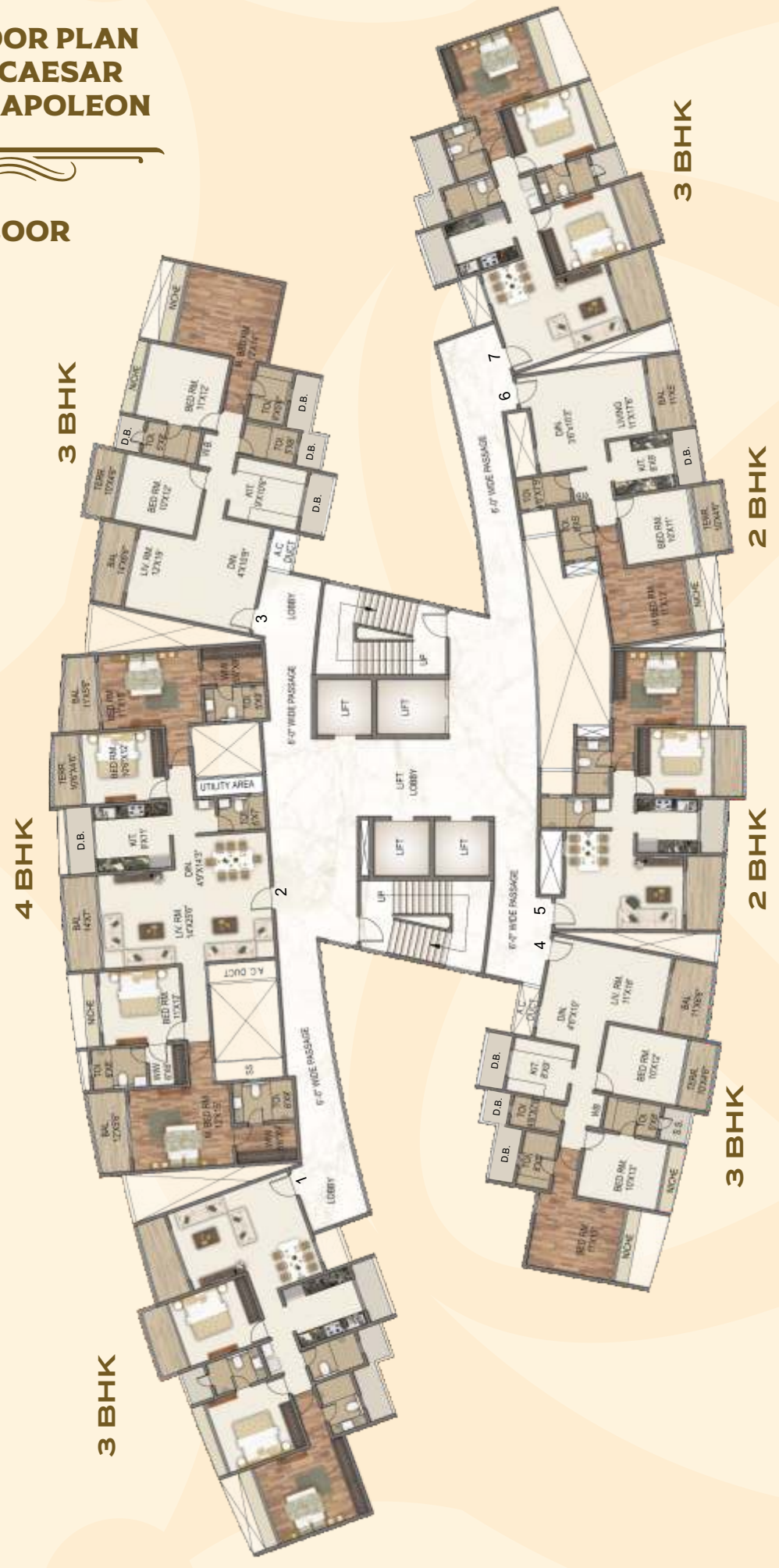
- 32 DECK
- 33 SANDY BEACH
- 34 WAVE POOL
- 35 WATER SLIDES PLATFORM
- 36 FUN POOL
- 37 AQUA GYM
- 38 RAIN DANCE ON SHIP
- 39 M.P.W.P.S.
- 40 BUBBLE POOL
- 41 JACUZZI WITH HOT JETS
- 42 LEISURE POOL
- 43 SUNKEN BAR
- 44 KIDS POOL COVERED WITH TENSILE ROOF
- 45 LAP POOL 50 M X 10 M
- 46 REFLECTION POOL
- 47 PARTY LAWN
- 48 PATHWAY
- 49 CLUB ENTRY DECK
- 50 DECORATIVE PLAZA
- 51 MEDITATION GAZEBO
- 52 LEISURE LAWN
- 53 THICK PLANTATION ALONG PARAPET
- 54 CLUB ATHENA
- 55 GROUP SEATS
- 56 DESIGN WALL WITH ARCHWAY TO PLAY-COURT

**TYPICAL FLOOR PLAN  
TOWER - 1 - CAESAR  
TOWER - 3 - NAPOLEON**

**EVEN FLOOR**

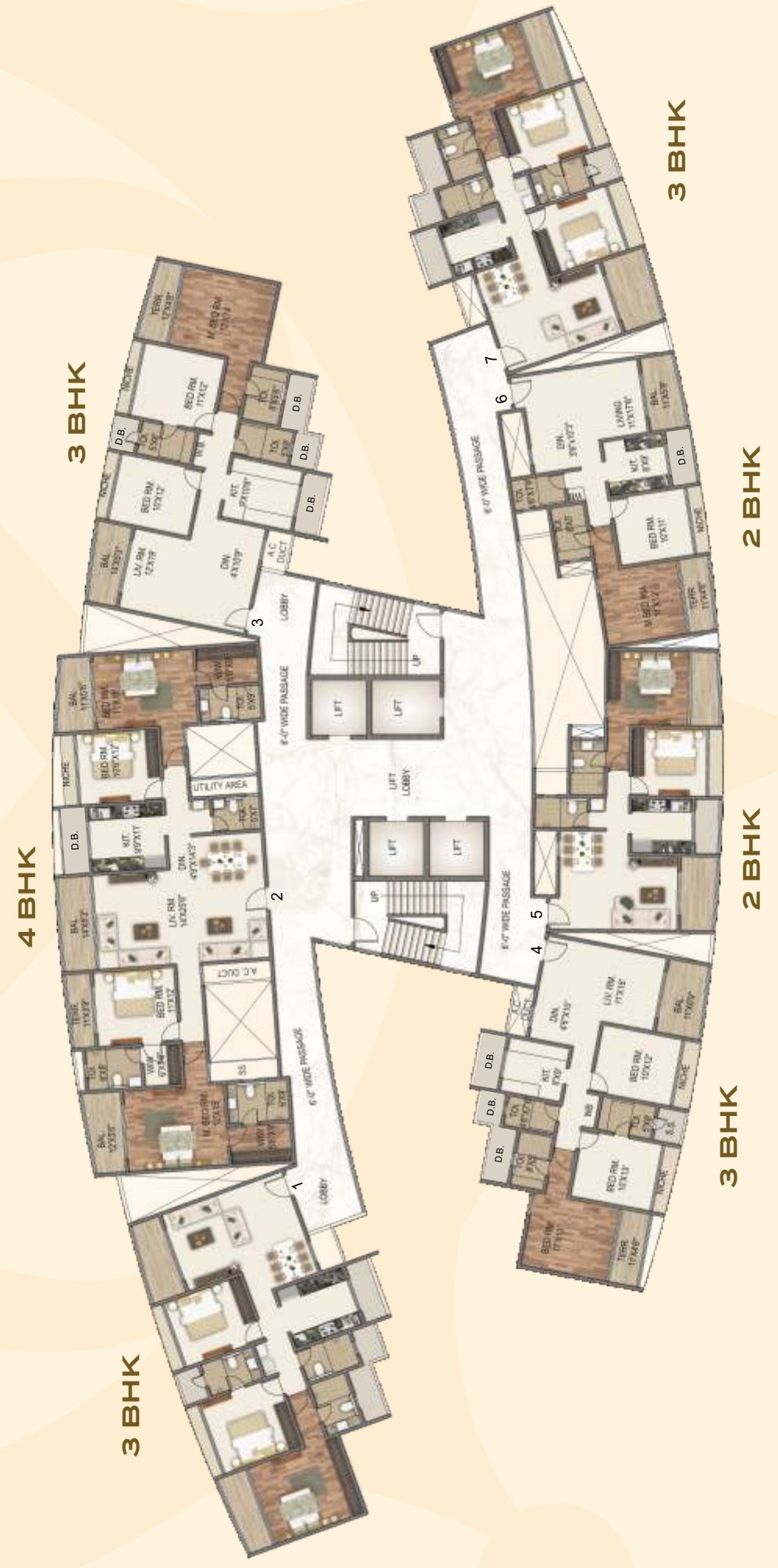
**ODD FLOOR**

**HILL VIEW**



**PODIUM VIEW**

**HILL VIEW**



**PODIUM VIEW**



TYPICAL FLOOR PLAN  
TOWER - 4 - CLEOPATRA

EVEN FLOOR

PODIUM VIEW

2 BHK

2 BHK

3 BHK

3 BHK



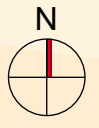
3 BHK

2 BHK

2 BHK

3 BHK

HILL VIEW



PODIUM VIEW

2 BHK

2 BHK

3 BHK

3 BHK



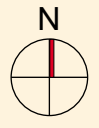
3 BHK

2 BHK

2 BHK

3 BHK

HILL VIEW



TYPICAL FLOOR PLAN  
TOWER - 5 - CHARLES

EVEN FLOOR

PODIUM VIEW

4 BHK



3 BHK

3 BHK



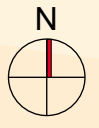
3 BHK

2 BHK

3 BHK

2 BHK

HILL VIEW



PODIUM VIEW

4 BHK



3 BHK

3 BHK



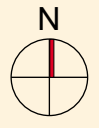
3 BHK

2 BHK

3 BHK

2 BHK

HILL VIEW





Artist's Impression



**PARADISE MALL**  
KHARGHAR

**PROJECT HIGHLIGHTS**

- A WELL-PLANNED COMMERCIAL MALL WITH G+2 STOREYS
- LOCATED AT A PRIME LOCATION IN KHARGHAR
- ARCHITECTURALLY WELL-DESIGNED DESIGNER FAÇADE
- CONNECTED TO SAI WORLD EMPIRE RESIDENTIAL TOWNSHIP OF MORE THAN 2000 FAMILIES
- A WELL-PLANNED LAYOUT FOR MAXIMUM SPACE EFFICIENCY
- SMALL AND MEDIUM SIZED ENTERPRISES & ANCHOR SHOWROOMS
- 24\*7 CCTV CAMERA SURVEILLANCE
- POWER BACK-UP FOR ALL SHOPS AND COMMON AREAS
- 14 FT. FLOOR HEIGHT

**PARADISE GROUP**  
PERFECT PAST, PRESTIGIOUS PRESENT,  
PROGRESSIVE FUTURE



It's been a long yet fruitful journey for Paradise Group. We began more than three decades ago with a clear aim of providing lavish and appealing spaces for all to dwell. We have come a long way after constructing more than 100 successful projects across Navi Mumbai as of today's date. This rendezvous of more than 32 years has made us a team of highly experienced construction experts. Keeping abreast with the latest technology and implementation of world-class techniques are the reasons why our structures are not just luxuriously designed marvels, but also perfect specimens of 'beauty with quality'.

With structures that are a beautiful mix of high-end luxuries and modern amenities and pose an elegant touch of culture, we have attempted to make this world a better place to live in. Our past has been glorious and made us proud in constructing 5 Million Sq. Ft. of land area that gave our customers best places to live an enhanced life. At present we are developing over 12.5 Million Sq. Ft. of land area across prime locations of Navi Mumbai and Mumbai like Kharghar, Panvel, Taloja, Ulwe, Dronagiri, Dombivali, Kalyan and Lonavala providing highly innovative, state-of-the-art construction for the classes as well as the masses. With an extremely progressive attitude, today we are forging ahead towards a bright future with a massive land bank of another 12.5 Million Sq. Ft. of through which we are committed to bring in a big change in present housing concepts. We are sure that our sincere efforts towards making this world a 'Paradise' will definitely become a pleasant reality in the near future.



Artist's Impression